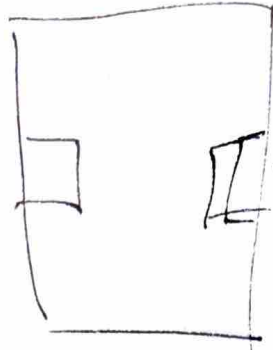


for bodies + wrists.
Must be able to hold
letter size paper, too.

Wristband For

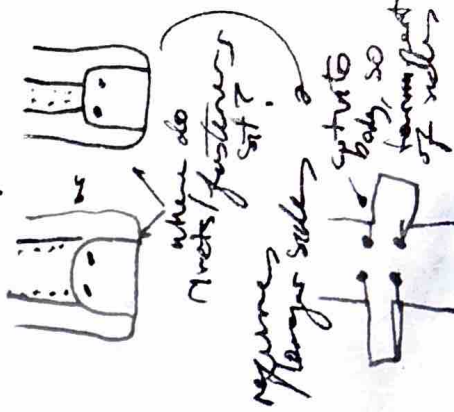


don't cut off -
fold up.



side view

width of tape
not too thick?
Same two gussets
width?



when do
straps/fasteners
set?

requires
larger sides

extends
to body, so
forming part
of wrist

→ or

rolled handles w/
buckle.

as just
strap bit?



for buckle
attached to ~~the~~ body



w/ extra gusset

w/ loops to add
shoulder strap

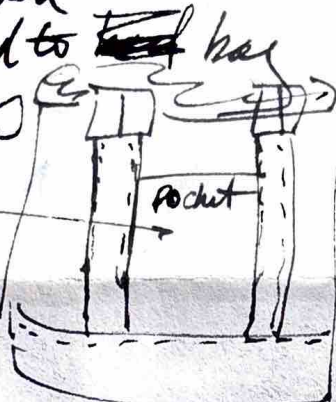


when



with
an "inside" side
gusset & straps when.

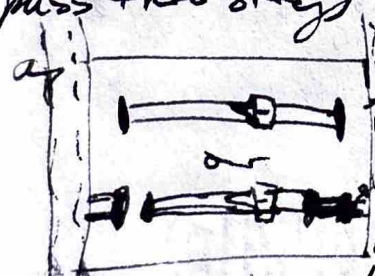
Pocket on both
sides?
or pass thru



pocket

for luggage

or pocket w/
pass thru straps



1 hole, stitched
into ~~side~~ of panel

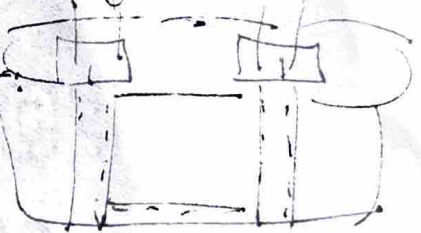
2 holes, stitched
onto ~~side~~ of panel

side flap need w/
of foot - shorter? taller?
or foot same height?
but no gusset.

separate foot?

→ 1 or other?

If no foot.



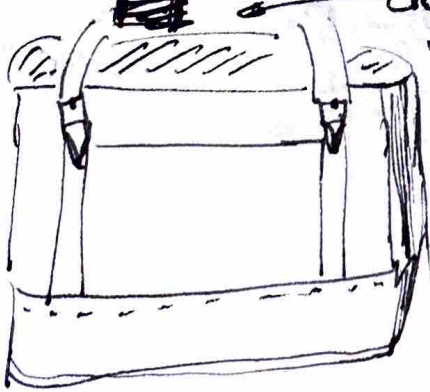
loop underneath?

just handle

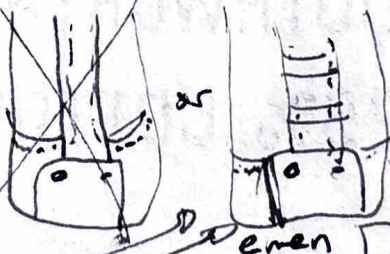
or multiple w/out



closure
flaps?

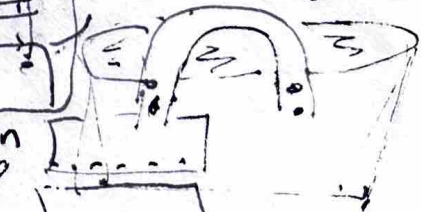


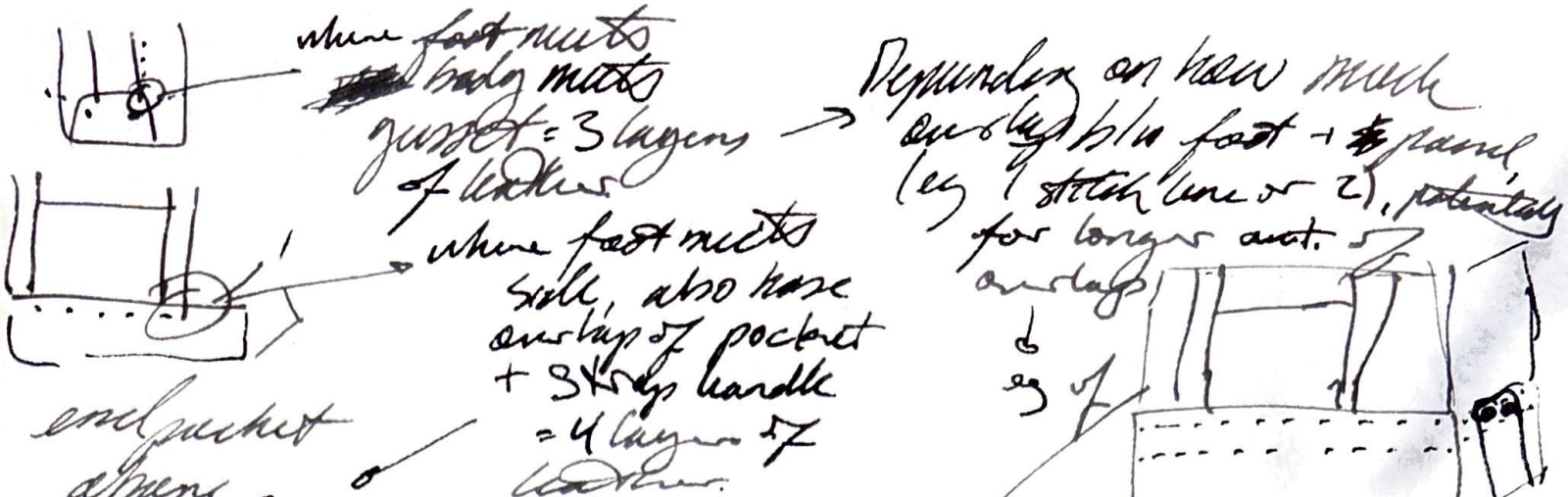
or both:



even
w/ flap

hidden
internal strap
connection? of buckle
under flap.





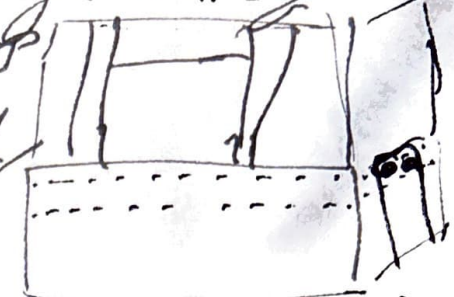
where foot meets body mitts
 gusset = 3 layers of leather →

Depends on how much overlap to foot + parallel (eg 1 stitch line or 2), potentially for longer cut. 5

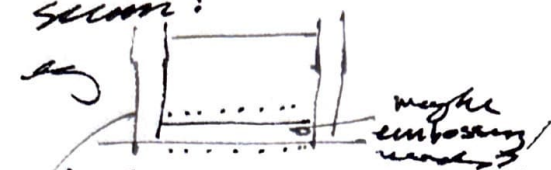
end pocket alone? seam?

where foot meets sole, also have overlap of pocket + 3 strap handle = 4 layers of leather.

also need to make some pocket is functional (not just flat against sole)

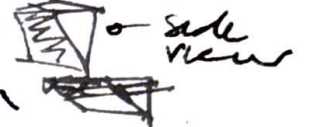
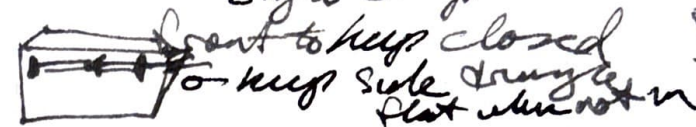


trapezoidal shape gives 30 but flat @ bottom in

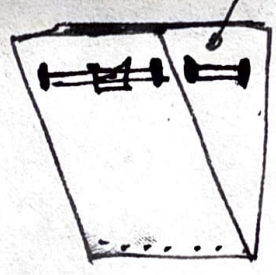


X no. strappings replaceable
 strap attachment wrap over top & go inside finished on inside too

Could do Hermès/Birken - style strap that goes to keep closed to keep sole straight flat when not in



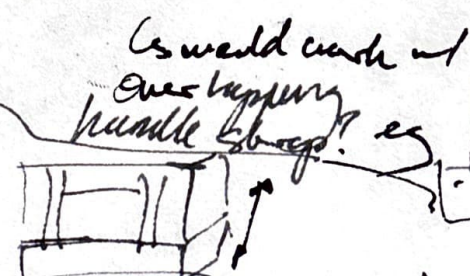
how attach removable/replacable from handle?
 other knots strong enough? could Chicago screw to handle? requires hole.



use to crush flat.

need more closure @ top? eg internal closure below lip (weld bygs?) of tunnel on side?

need flat bottom - not gusset AND use full dimensions

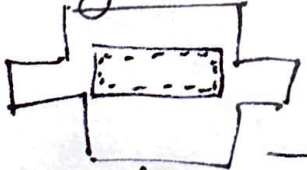


how work w/ trapezoidal? would fold come up / look okay?

add "floor" piece (section, rectangle covering foot):

depending on height, how to keep gusset? not too deep; prevent digging around.

want pocket to hold full letter paper? is might be too big, a little for 1/2 AS?



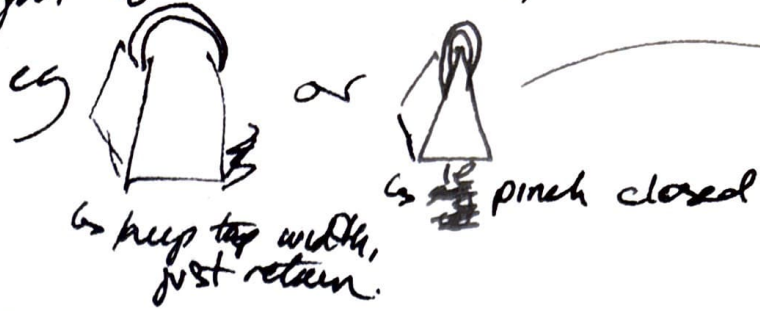
add stitches, too?

Add rigids, slatons. Emboss/print message? (only seen looking in 1/2 in slatons empty)

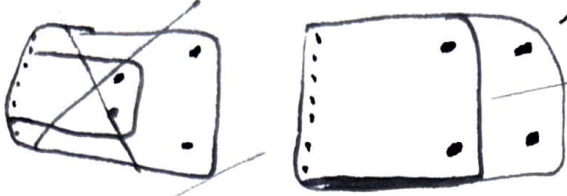
Emboss/print front pocket w/ message/word

LID: Flat h/w handles (or Birken-style closure, not
 stiff to accommodate when
 closed?)

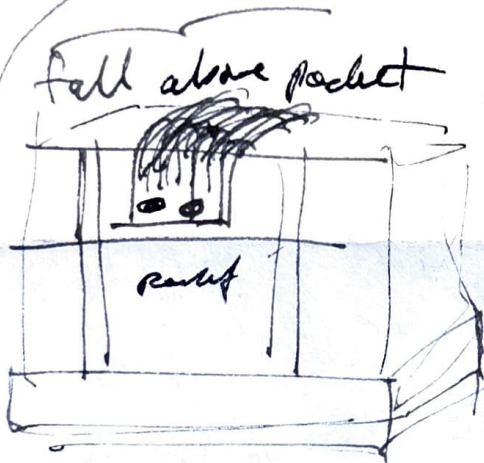
how "tight" to
 close?



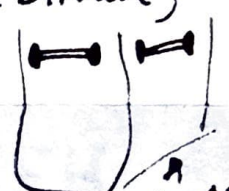
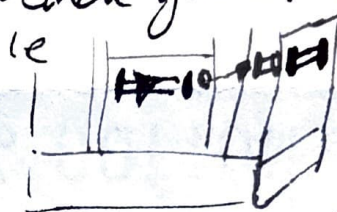
2 diff lids?
 eg (w/ lxxx)



use 1 or other for tighter/looser fit
 smaller one can attach to larger
 one, when in use (detached),
 larger falls inside bag.



Retaining/closure straps
 for front pocket wrap-around
 to arch gusset, (à la Birken)



back side,
 use as luggage
 strap to add to
 roller bag



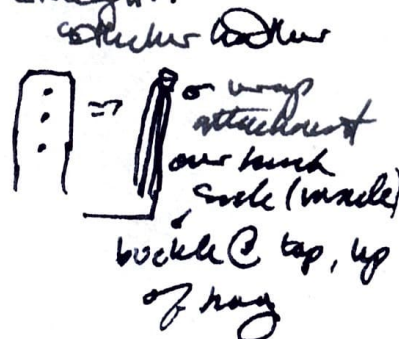
measure height
 of handle, make
 one comfortably
 reach



vt space
 to actually
 use handle

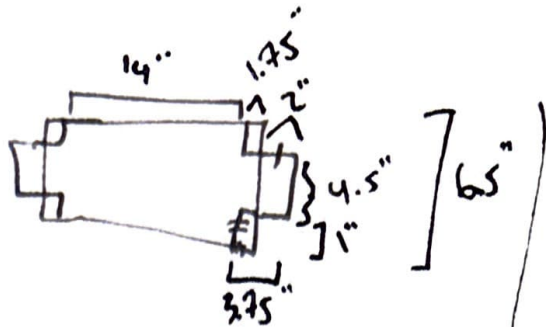
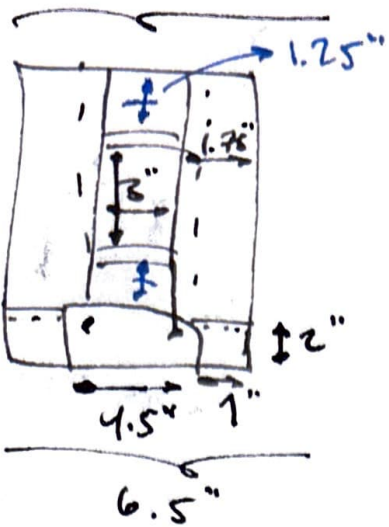


Rolled handles or
 straight?



maybe lxxx (removable on
 both sides, detachable
 entirely)

6.5" x 9" ?



6.5" x 9" x 14" ?

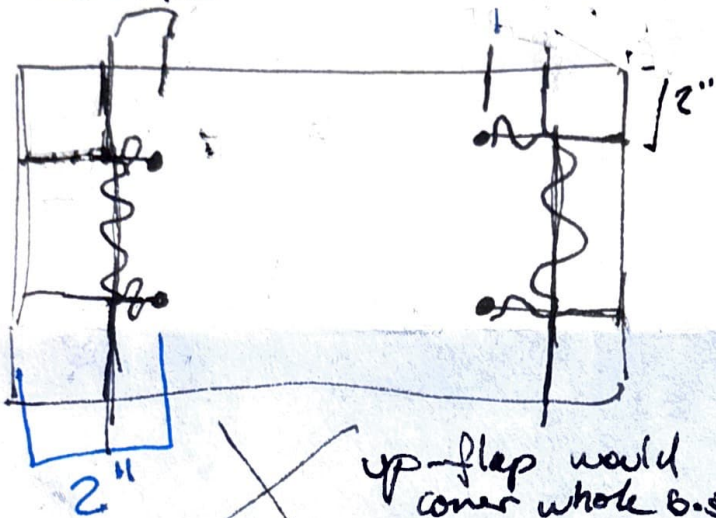


gusset 3" + seam (4mm)

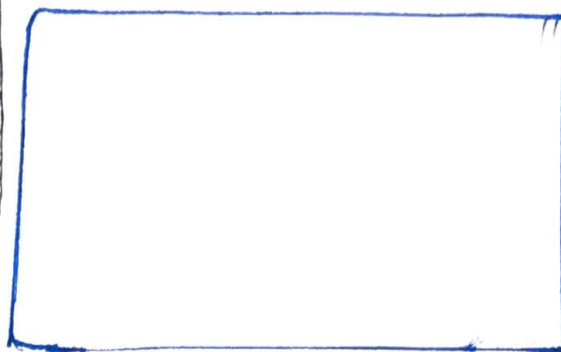
14

6.5 SIDE

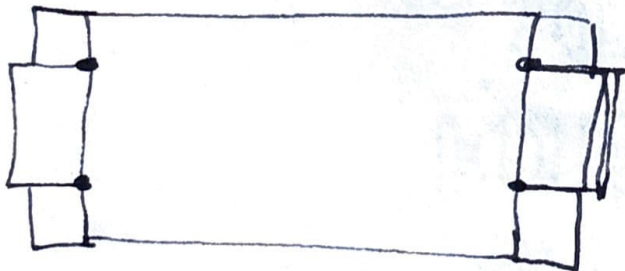
base: 1.75"



up-flap would cover whole 6.5" in trad. tote style

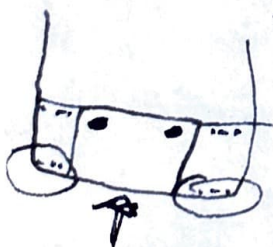


FRONT

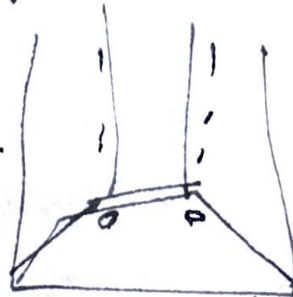


or stitch blue flap & adref corner
↳ turns?

could



turn into strap attachment?
no belt w/ buckle on either end

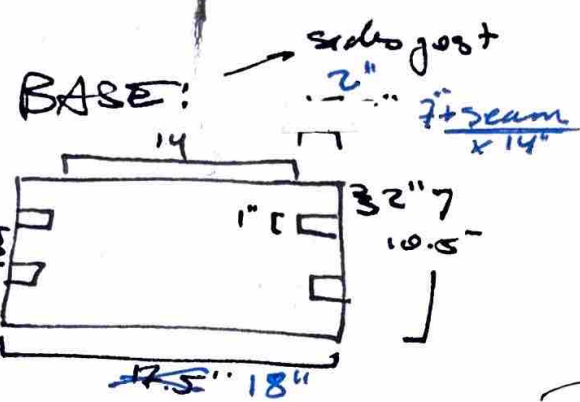
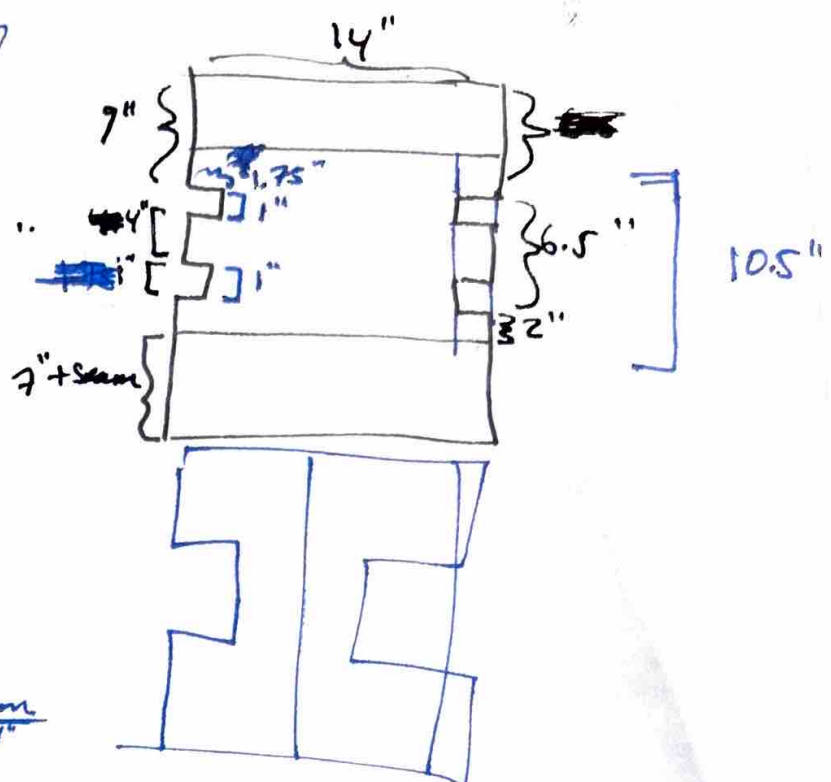
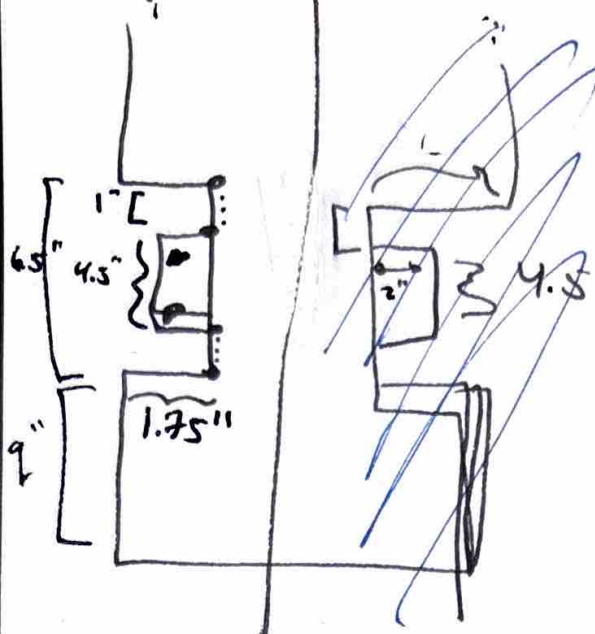


runs thru inside of bag?

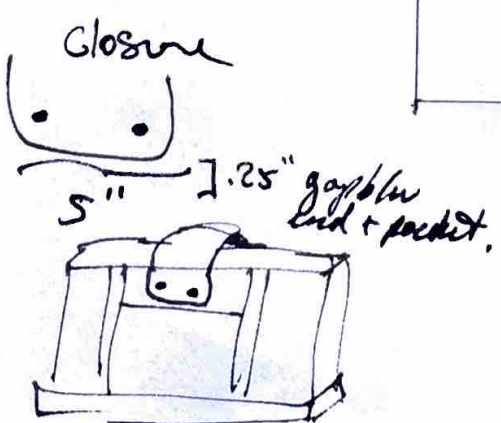
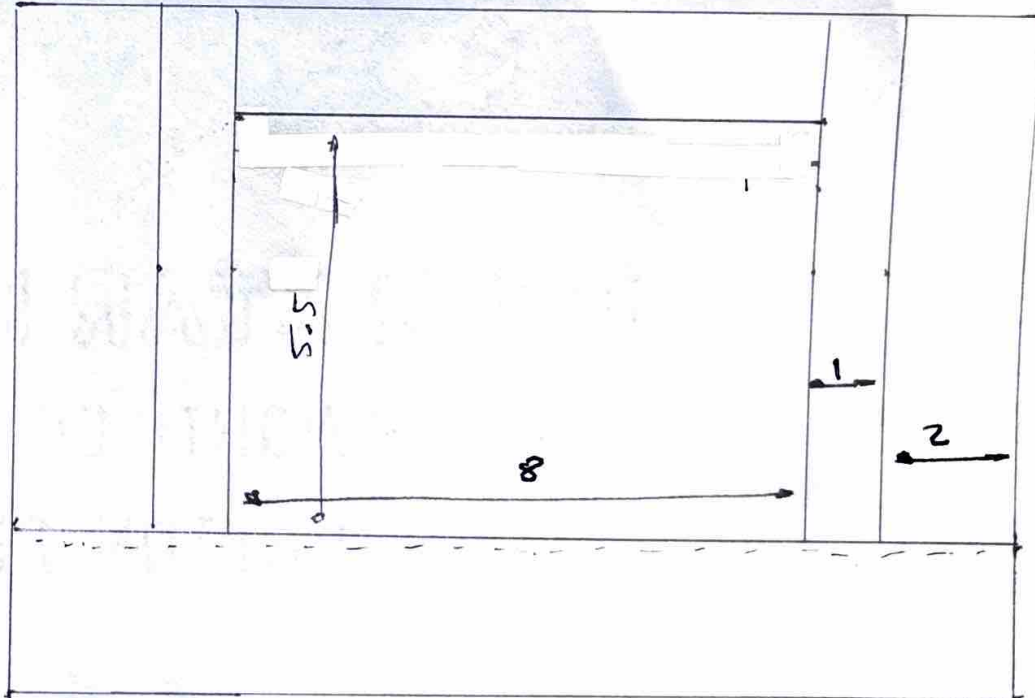
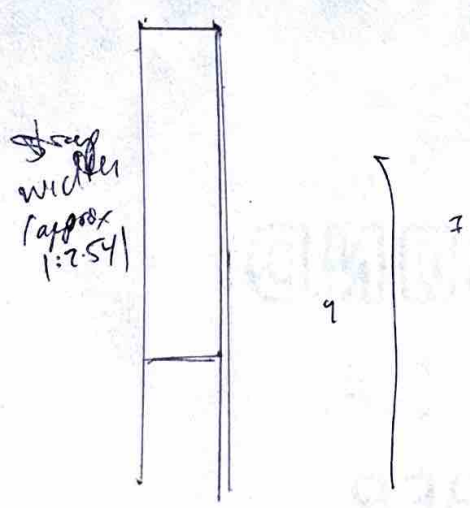
leave "open" (unstitched)
stitch/ad to hold weight.

sits on floor of bag, buckles up vertically
add straps across front of bag?

turns of sides as with on side gusset.



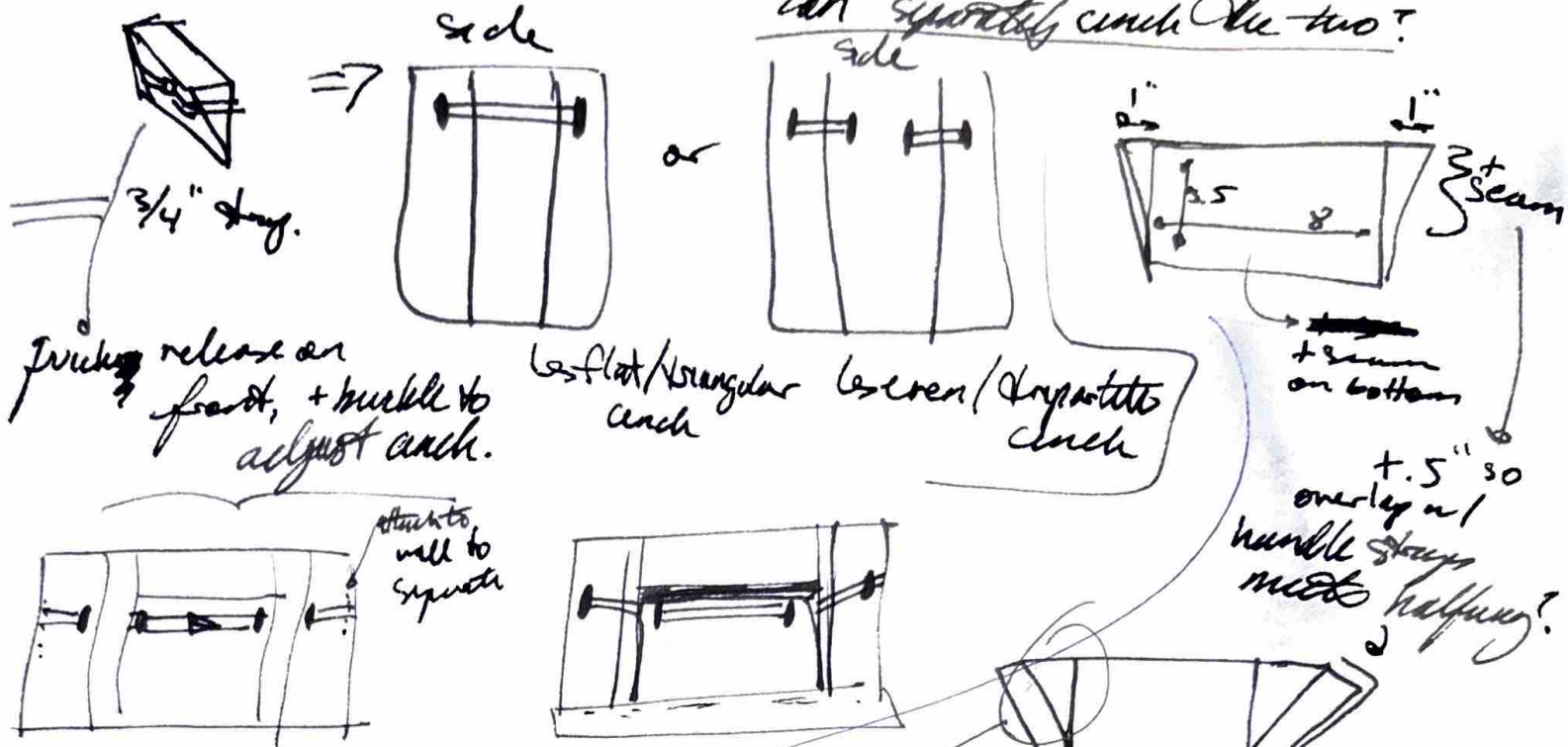
spacing (+ size) of packet?
 ↳ sandwiched b/w
 middle stages (1" ? 1.75" ?)
 14



want rectangular packet 5.5 x 8
 need forehead/headspace for
 closure

Cinches: use to close front pocket + cinch sides

separate? eg. attach to wall, so
can separately cinch the two?



friction release on front, + buckle to adjust cinch.

flat/triangular even/diagonally cinch

+ seam on bottom
+.5" so overlap w/ handle stays needs halving?

attaches well to square

NOT exactly - needs to be same height when folded into accordion
ie diagonal length also 5.5"

by bigger? eg 2"
accordion folds along 1/2 way mark need space for ~~the~~ retaining step.

